

*Diameter of 2", 3" & 4", heights of 14", 16", 18", 22", 36"*  
Protection for infant trees & vines, plant grow tubes.

# BOA FANG<sup>™</sup> TREE GUARD & GROW TUBE

2 SEASONS

FIELD COMPOSTABLE MULTI SEASON

CREASED FOR RAPID MANUAL FOLDING INTO SLEEVES

NATURAL PEST REPELLANT

DESIGNED TO BE LEFT IN THE FIELDS



CLAY + WET STRENGTH PAPER = 

PLASTIC COATED PAPER = ~~~~



# KEY FEATURES

- Natural Pest Repellant and Herbicide Resistant
- Highly Compostable to Soil after use in 6 months most conditions
- Composts in Field no disposal needed
- **No** Tools required
- Retains Strength Wet
- Excellent Appearance & Life Expectancy 2+ years
- Flexible fast installation and easily transported for field assembly into sleeves or onto bases of plants with canopies.
- Apply guard above 13C White side out.
- Expose adhesive by removing liner & dispose to waste not in field.
- To restrain the guard in high winds, tether a 10" Boa Fang Zip Tie around the plant and apply the extended length of Zip Tie to the glue during assembly.
- Wrap around tree or pre-fold into sleeves and apply pressure on adhesive area full length of guard to adhere.
- To reuse secure with staple or Boa Fang Zip Tie.
- Natural oil coated inside to discourage pest damage to guard and plant.
- Water drainage & guard stake features available.



	PN Size: TREE GUARDWWxHH in inches example 13x14			
Width (WW)	Height (HH)	Diameter (in)	Bundles	Bundle Weight (lbs)
7", 10", 13"	14	2, 3 & 4	250	22
10", 13"	16	3 & 4	200	22
10", 13"	18	3 & 4	175	22
10" 13"	22	3 & 4	150	22
13"	36	4	125	28



# STARTING, MID-SEASONS AND END OF SEASONS





CLAY + WET STRENGTH PAPER = 

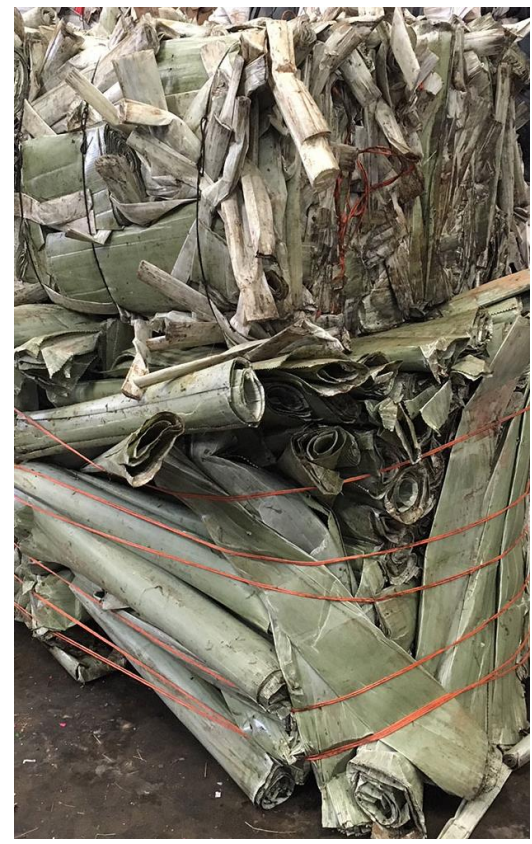
PLASTIC COATED PAPER = ~~~~

~~~~



~~~~







# AFTER 2 SEASONS TREE GUARDS







# THANK YOU



[SALES@CINCHSTRIP.COM](mailto:SALES@CINCHSTRIP.COM)

[GM@CINCHSTRIP.COM](mailto:GM@CINCHSTRIP.COM)



[WWW.BOAFANG.COM](http://WWW.BOAFANG.COM)